

Hotel Business®

Jan/Feb 2014

# DESIGN

The Business of Hospitality Style®

## Teaming Up the HOK BBG-BBGM merger

products & trends  
LIGHTING, LINENS & FANS

DESIGNER OUTLOOK  
STATE OF THE INDUSTRY



## HFS CONCEPTS 4



Intelligent Design. Welcome to the evolution.

Architecture Interior Design Procurement Construction Services

[www.hfsc4.com](http://www.hfsc4.com)



The LS Series LED collection from Troy RLM Lighting offers aluminum adjustable fixture heads with 360-degree horizontal and 180-degree vertical rotation. The fixture can be mounted as a single application with a multitude of mounting variations including an option to mount two lights on the same arm.

**T**o strike the desired mood for any hotel interior, lighting plays a crucial role. "The bottom line with hospitality is creating memorable experiences, and lighting is so key to that," said Lorraine Francis, AIA, LEED, BD+C, regional director of hospitality interiors for Gensler. "Whether you arrive to the hotel during the daytime or at night, lighting is critical to those first impressions."

In the guestroom, Millennials are changing the way designers are thinking about lighting. According to Francis, this generation is leaning toward working from the bed as opposed to the desk, which means that sconces with adjustable arms, LED pendants and sculptural task lamps are becoming the norm. "If you look at a hotel like Yotel, the guests are going down to the lobby or working from their bed," said Francis. "Yotel has a great bed that reclines for this type of traveler who is using the room differently."

For public spaces, clustering different types of lighting and mixing sizes is a popular design choice, according to Kellie Sirna, principal of Studio 11 Design. In the lobby and food and beverage areas, Sirna uses clustered chandeliers as a tool to develop a lighting path for the guest.

Dramatic color palettes have influenced the design of lighting. "Hotels have been getting more adventurous in design and with that comes designers using bolder walls and more reflective surfaces with the brightness in the accents," said Sirna. "All of this affects not only the style, but the amount of lighting. We, as designers, are also using lighting in entirely new ways for architectural details."

When selecting ceiling fans, sustainable fans with efficient motors that reduce wattage while still offering maximum performance are the way to go, noted Francis. "Creating comfort in the guestroom is key," she said. "It's really about the efficiency of the motor and bringing down the energy costs."

—Matthew Marin



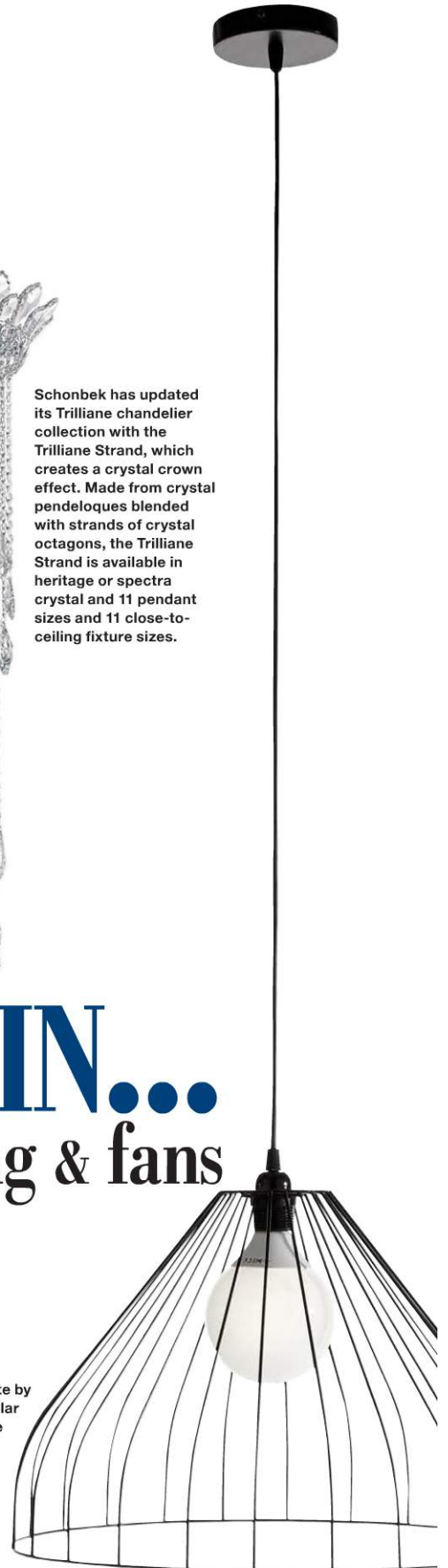
Schonbek has updated its Trilliane chandelier collection with the Trilliane Strand, which creates a crystal crown effect. Made from crystal pendeloques blended with strands of crystal octagons, the Trilliane Strand is available in heritage or spectra crystal and 11 pendant sizes and 11 close-to-ceiling fixture sizes.

# WHAT'S HOT IN... lighting & fans



From Craftmade International, the Ellington Colossus ceiling fan features six blades and is available in two finishes—brushed pewter and espresso. Damp-rated and available in a 96-in. and 72-in. blade sweep, the fan features an energy-efficient, direct-current motor.

Ligne Roset offers Parachute by Nathan Yong (right), a modular pendant lamp made of three steel-wire elements, which can be combined to form a number of compositions. Each wire piece can be turned upside-down or right-side up and added to others, allowing anywhere from one to six wire elements per composition.



continued on page 40



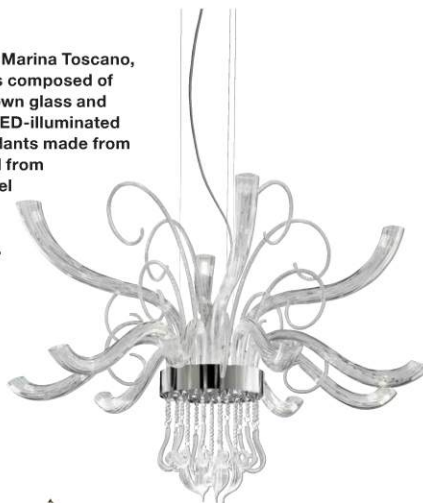
The Haiku ceiling fan from Big Ass Fans (above) includes a new patent-pending LED light module integrated seamlessly into the fan's minimalist design. The LED module's digital dimmer offers 16 increments of brightness. It is available in black, white, caramel and cocoa finishes.

Emerson's St. Croix's dual-motor ceiling fan (left) spans a width of 54 in. from fan motor to fan motor and can be adapted with extended down rods to accommodate ceilings from 11 ft. to 15 ft. This anchor style design includes leather straps and an assortment of seven blade sets to choose from.



Using LED technology, Nenúfar by Maset features a cluster of pendants made from several discs connected by the same stem. Each pendant is separate from the others in such a way that the beams emitted by the different elements are not broken by the lowest component—which also projects its ray of light downwards.

By Venetian designer Marina Toscano, Elysée from Leucos is composed of translucent, hand-blown glass and includes sculptural, LED-illuminated arms. Jewel-like pendants made from handcrafted glass fall from Elysée's polished-steel and chrome-plated metal structure. It is available in two sizes.



From Jacco Maris, the Montone round chandelier showcases an artful ribbon of metal encircling its luminescence. The chandelier comes in five-light and seven-light configurations and several finishes such as stainless steel, black high gloss, total brass, white, high gloss and delft blue.



Corbett Contract Lighting offers the Houdini pendant, which features open squares that are tilted on a diagonal with candelabra-style lamps balanced inside. Framed open interiors feature alternating chandeliers, some with crystal cylinders, others with crystal droplets, varying with smoke and clear tones.